

B&M Mouldings Inc. has achieved a professional standard in producing pre-coated, decorative architectural exterior mouldings and trims.

The pre-coated shapes begin with an expanded polystyrene base, which is reinforced with quality fibreglass mesh and then coated with an exclusive polymer modified cement base coat. Our formula provides a strong, resilient and cost effective decorative moulding.

The process results in superior flexibility and durability. This is key for any new construction project or renovation, making B&M's architectural extrusions best for the task.

B&M supplies a vast array of profiles and shapes including keystones, quoins, pilasters, columns, cornices, bands, trims, sills and casings. In addition we can produce custom designs according to your needs.

B&M offers timeless experience and professionalism for both residential and commercial projects. When you choose B&M Mouldings you choose the finest quality available.

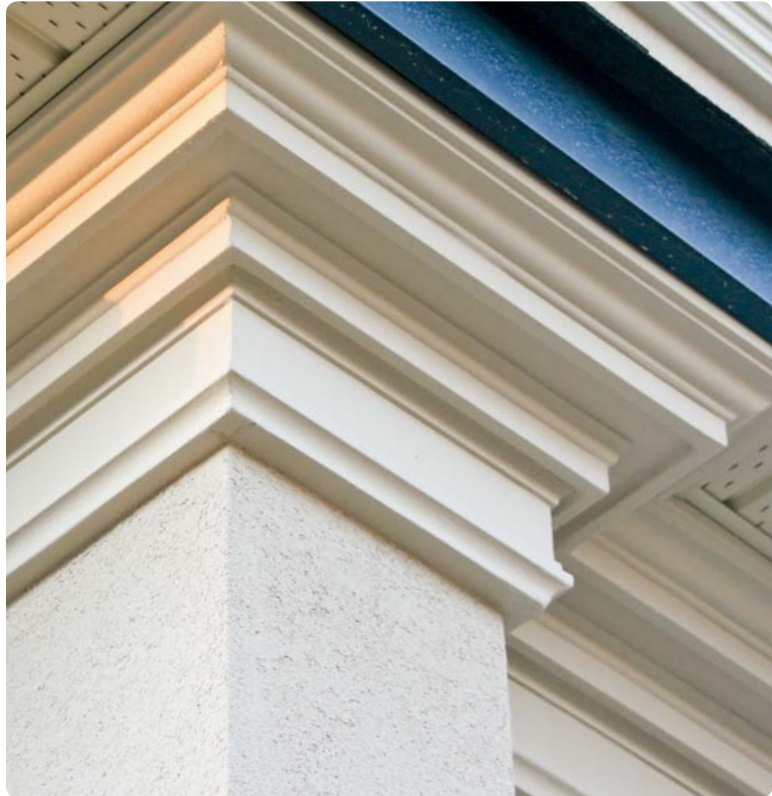
When choosing a quality product for a project, choose the B&M experience for the assurance.



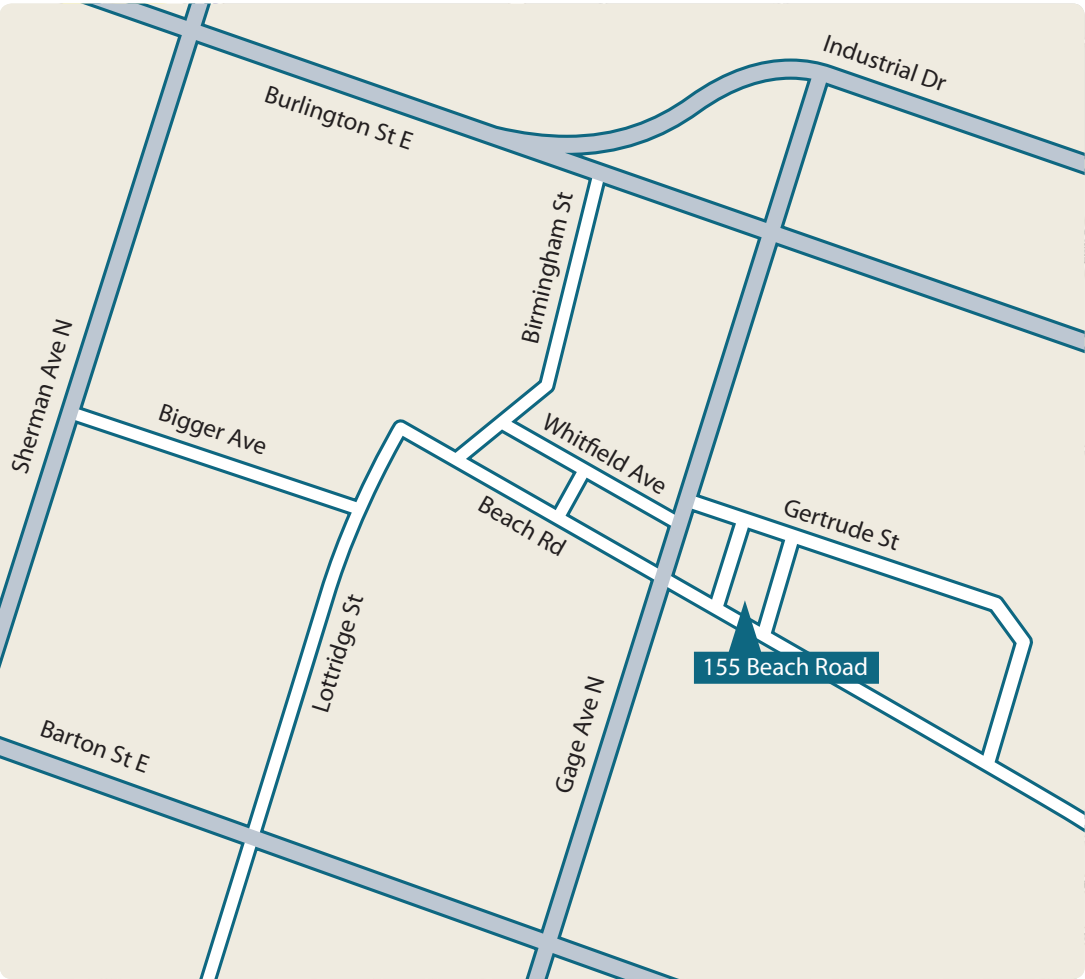
B&M Mouldings Inc.
Exterior Stucco Mouldings

155 Beach Road
Hamilton, ON L8L 4A4
www.bmmouldings.ca

Tel: 905-548-9900
Fax: 905-548-9902
info@bmmouldings.ca



B&M Mouldings Inc.
Exterior Stucco Mouldings



Columns Caps Bases



BMCAP-01
7" Height



BMCAP-02
4 3/8" Height



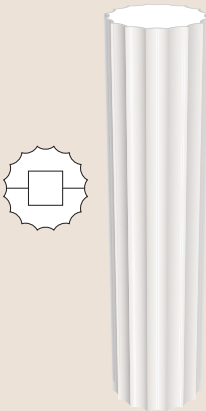
BMCAP-03
6 1/4" Height



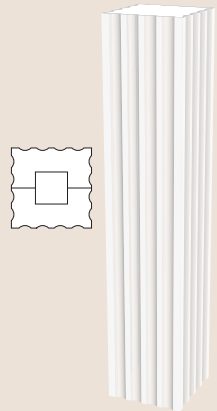
BMCAP-04
4 1/2" Height



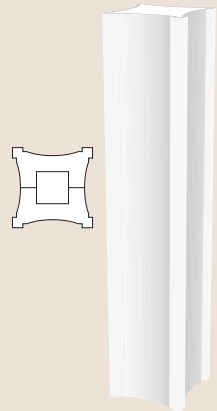
BMCOL-100 SERIES
Various sizes



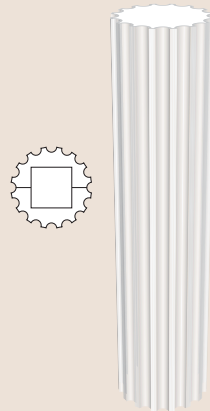
BMCOL-200 SERIES
Various sizes



BMCOL-300 SERIES
Various sizes



BMCOL-400 SERIES
Various sizes



BMCOL-500 SERIES
Various sizes



BMBASE-01
4 5/8" Height



BMBASE-02
4" Height



BMBASE-03
5 1/2" Height



BMBASE-04
3" Height

Trims

FLAT SERIES
Various sizes

BMTR-01
2 1/16" D x 4 1/8" H

BMTR-02
1 9/16" D x 4 1/8" H

BMTR-03
2 5/16" D x 6" H

BMTR-04
2 9/16" D x 6 1/8" H

BMTR-05
2 5/16" D x 6 5/8" H

BMTR-06
2 9/16" D x 6 1/8" H

BMTR-06A
1 3/4" D x 4 5/16" H

BMTR-07
3 5/16" D x 6 7/16" H

BMTR-08
2" D x 8 1/8" H

BMTR-09
1 9/16" D x 6 1/16" H

BMTR-10
2 5/8" D x 7" H

BMTR-11
2 5/8" D x 6" H

BMTR-11A
2 13/16" D x 8 1/4" H

BMTR-12
1 9/16" D x 6 1/4" H

BMTR-13
2 5/8" D x 5 1/4" H

BMTR-14
3 3/16" D x 5 5/16" H

BMTR-15
2 1/8" D x 5 1/4" H

BMTR-16
1 5/16" D x 4" H

BMTR-17
1 13/16" D x 6 3/16" H

BMTR-18
3 1/16" D x 6 1/4" H

BMTR-18A
3 5/16" D x 8 3/8" H

BMTR-19
1 7/16" D x 4 1/32" H

BMTR-20
2 11/16" D x 6" H

BMTR-21
1 7/8" D x 6 15/16" H

BMTR-22
1 7/8" D x 6 1/4" H

BMTR-23
3 7/8" D x 10" H

BMTR-23A
3 7/8" D x 6" H

BMTR-24
2 3/8" D x 4 1/4" H

BMTR-25
2 5/8" D x 5 5/8" H

BMTR-26
1 1/8" D x 4 11/16" H

BMTR-27
2 3/16" D x 4 7/16" H

BMTR-28
2 11/16" D x 6 1/16" H

BMTR-29
2 1/8" D x 5 1/8" H

BMTR-30
2 1/4" D x 4 3/4" H

BMTR-31
3 5/8" D x 6 3/4" H

BMTR-32
3 5/8" D x 8 3/16" H

BMTR-33
3 7/8" D x 8 9/16" H

BMTR-34
2 1/8" D x 9 1/16" H

BMTR-35
1 9/16" D x 7 1/8" H

BMTR-36
2 5/8" D x 4 1/8" H

Sills

BMSIL-01
2 9/16" D x 6 1/8" H

BMSIL-02
3 5/8" D x 6" H

BMSIL-03
3 1/16" D x 6 7/8" H

BMSIL-04
3 5/8" D x 4 3/4" H

BMSIL-05
4 3/8" D x 6 3/4" H

BMSIL-06
4 1/8" D x 5 15/16" H

BMSIL-07
3 1/16" D x 8 1/16" H

BMSIL-08
5 5/8" D x 6 1/4" H

BMSIL-09
5 1/16" D x 7 1/8" H

BMSIL-10
4 1/8" D x 6 7/8" H

BMSIL-11
3 5/8" D x 6 1/2" H

BMSIL-12
3 3/4" D x 6 15/16" H

BMSIL-13
4 1/8" D x 5 3/4" H

BMSIL-13M
4 3/16" D x 6 1/4" H

BMSIL-14
3 3/4" D x 4 1/4" H

BMSIL-15
3 3/4" D x 7 3/8" H

BMSIL-16
4 1/8" D x 5 5/8" H

BMSIL-17
4 1/8" D x 5 1/4" H

BMSIL-18
3 7/8" D x 8 1/8" H

BMSIL-19
3 1/16" D x 7 5/8" H

BMSIL-20
4 1/8" D x 6 1/4" H

BMSIL-21
3 1/2" D x 5 1/8" H

BMSIL-22
4 1/8" D x 5" H

BMSIL-23
3 1/2" D x 5 1/4" H

BMSIL-24
4 3/16" D x 4 5/8" H

BMSIL-25
4 7/8" D x 8" H

BMSIL-26
3 5/8" D x 8" H

Headers

BMHD-01
5 1/2" D x 6 1/2" H

BMHD-02
5 5/8" D x 8 7/8" H

BMHD-03
4 1/4" D x 6 7/8" H

Quoins
Keystones
Pilasters

BMQUOIN-01
Various sizes

BMQUOIN-02
Various sizes

BM-KEystone 100
Various sizes

BM-KEystone 200
Various sizes

BMQUOIN-02 STACKED
Various sizes

BMPLT-01
Various sizes

BMPLT-02
Various sizes

Cornices

BMCOR-01
4 15/16" D x 7 3/4" H

BMCOR-02
6 1/16" D x 8 1/8" H

BMCOR-03
4 1/8" D x 7 1/8" H

BMCOR-04
5 5/8" D x 7 5/8" H

BMCOR-05
7 1/8" D x 8 5/8" H

BMCOR-06
5 1/8" D x 11 1/4" H

BMCOR-06A
5 3/8" D x 11 1/4" H

BMCOR-07
4 1/8" D x 10 1/8" H

BMCOR-08
9 1/8" D x 16 1/2" H

BMCOR-09
7 1/8" D x 7 5/8" H

BMCOR-10
5 1/8" D x 18 1/2" H

BMCOR-11
6 1/8" D x 9 5/8" H

BMCOR-11A
5 1/8" D x 9 5/8" H

BMCOR-12
9 3/8" D x 12 1/4" H

BMCOR-13
4" D x 8" H

BMCOR-14
4" D x 8 1/8" H

BMCOR-14A
3 1/8" D x 3 3/4" H

BMCOR-15
5 1/8" D x 6 1/4" H

BMCOR-16
5 1/8" D x 9 1/4" H

Bands

BMBAN-01
3 1/8" D x 9 3/8" H

BMBAN-02
4 3/8" D x 10 5/16" H

BMBAN-03
4 1/16" D x 10 1/8" H

BMBAN-04
6 1/16" D x 10 1/8" H

BMBAN-05
2 1/16" D x 9 1/4" H

BMBAN-06
2 1/16" D x 6 3/4" H

BMBAN-07
1 3/4" D x 5 3/4" H

BMBAN-08
3 1/2" D x 13 1/8" H

BMBAN-09
4 1/4" D x 16 1/4" H

BMBAN-10
7 1/8" D x 24 3/4" H

BMBAN-11
2" D x 7 1/2" H

BMBAN-12
3 7/8" D x 10 3/4" H

BMBAN-13
3 5/8" D x 15 3/4" H

BMBAN-14
5 3/8" D x 14 9/16" H

BMBAN-15
4 1/8" D x 9 1/4" H

BMBAN-16
3 7/8" D x 14 3/4" H

BMBAN-17
3 3/8" D x 8 1/8" H

BMBAN-18
5 1/8" D x 12 1/8" H

BMBAN-19
3" D x 4 7/8" H